

June 20, 2016

FOR IMMEDIATE RELEASE

Publicity Department
Oriental Land Co., Ltd.

Tokyo Disneyland and Tokyo DisneySea Special Event
Disney's Halloween
September 9 – October 31, 2016

URAYASU, CHIBA— The special event, “**Disney's Halloween,**” will take place at **Tokyo Disneyland®** and **Tokyo DisneySea®** Parks from September 9 through October 31, 2016. During this special event period, Guests can also enjoy the Halloween atmosphere at the Disney Hotels and on the Disney Resort Line. This Disney-style Halloween event will provide families and friends even more enjoyment and fun at **Tokyo Disney Resort®**.

The special event at **Tokyo Disneyland** Park will be themed to a Halloween music festival. Mickey Mouse and his Disney Friends join ghost and skeleton “stars” in entertaining Guests with a variety of amusing and exciting musical performances in “**Halloween Pop'n LIVE,**” presented along the parade route. Each of the units in this parade will be uniquely themed to a different genre of music and decorated with jack-o'-lanterns, skeletons and other Halloween motifs. The Disney Friends wearing Halloween costumes that match the theme of the units will appear on the floats as the fun and dynamic music plays, making Guests want to dance along. With the decorations in World Bazaar and around the Plaza also featuring the Halloween music festival theme, Guests will find a lively atmosphere filling the Park.



Disney's Halloween at Tokyo Disneyland

Tokyo DisneySea Park, which is currently holding the “Tokyo DisneySea 15th Anniversary: The Year of Wishes” special event, will present a cool, but eerie Halloween event themed to the Disney Villains*. This year, to celebrate the Park's 15th Anniversary, the Disney Villains make it an even more exciting Villains-style Halloween with Mickey Mouse and the Disney Friends. Presented at Mediterranean Harbor will be “**The Villains World: Wishes and Desires.**” In this harbor show, the Disney Villains take the leading roles and they put on their best performances to attract and impress the Disney Friends and Guests. Dressed in costumes inspired by the Disney Villains, Mickey Mouse, his friends and all the Guests join the party and raise the level of Halloween excitement.



Disney's Halloween at Tokyo DisneySea

Photos are concept images. ©Disney

* “Disney Villains” refers to the villain characters who appear in Disney films.

Taking place in Arabian Coast will be “**Casbah Magical Treat**,” a special program that was a hit last year. At Casbah Food Court, Guests will find special menus and decorations inspired by Jafar, the villain from the Disney film *Aladdin*. Both inside the restaurant and in the palace courtyard, atmosphere entertainment will be provided by Shaban and Asim from the Magic Lamp Theater attraction. Guests will also be able to enjoy the Disney Villains-style Halloween through the atmosphere entertainment by loyal servants of the Disney Villains and Disney character greetings around the Park.

Dressing up in full Disney Character costumes** will be allowed on a limited number of days during the Halloween event period. Guests will be able to enter not only Tokyo Disneyland, but also Tokyo DisneySea with its exciting Disney Villains-style Halloween, dressed as their favorite Disney Characters.

Please see the attachment for more details.

***Please include the following when referring to wearing costumes in Tokyo Disneyland or Tokyo DisneySea:* For details on the restrictions for visiting Tokyo Disneyland and Tokyo DisneySea in full Disney Character costumes, please check the Tokyo Disney Resort Official Website (in Japanese only) or contact the Tokyo Disney Resort Information Center.

Note: Saturdays, Sundays and national holidays in October, November and December are designated as days when Park admission is restricted to Fixed-Date ticket holders. We recommend purchasing Fixed-Date tickets in advance to ensure Park admission on the restricted dates. For details, please see the ticket information page on the Tokyo Disney Resort Official Website (http://www.tokyodisneyresort.jp/manage/info/ticket_en/).

For inquiries from the general public, please give the following contact number:
Tokyo Disney Resort Information Center 0570-00-8632 (9:00 a.m. – 7:00 p.m.)
Note: From overseas, and from some mobile phones and IP phones, please call 045-330-5211.

###

ATTACHMENT

Tokyo Disneyland Special Event “Disney’s Halloween”

Entertainment Programs

Halloween Pop’n LIVE

Location: Parade Route

Duration: About 50 minutes

Performances: 2 daily

Number of Performers: About 90

Number of Floats: 6

Premiering this year, the “**Halloween Pop’n LIVE**” parade is themed to a music festival. The Disney Friends invite all the Guests to join in the excitement as a wide variety of music performances are presented in a Halloween atmosphere.

This season, the Disney Friends together with the ghosts and skeletons who are entertainment “stars” have come to give Guests a fun time in the spooky Halloween atmosphere of the parade route. Goofy, the parade’s promoter, enters at the head of the parade, while the Disney Friends, dressed up as jack-o’-lanterns, witches and other Halloween characters, follow with the “stars” of Halloween. They all show off their dancing and other musical performances.

The parade stops in nine locations and the floats each present a different genre of music, including pop, Latin and rock, for a unique Halloween-style performance. Guests can join in clapping to the exciting and cheerful rhythms as the music festival reaches its high point. Guests are sure to have a fun time together with the Disney Friends.

Description of Parade Units

Unit	Theme	Participating Disney Characters
1	A super cool club performance with Mickey, his pals, and bats	Mickey Mouse, Max
2	Humorous jazz performance with Chip 'n Dale and skeletons	Chip, Dale, Pluto
3	Cute pops performance with the Three Little Pigs and singing mummy idols	The Three Little Pigs (Fifer Pig, Fiddler Pig, Practical Pig)
4	Funny Latin music performance with Donald Duck using musical instruments made of pumpkins	Donald Duck, Huey, Dewey, Louie
5	Wildly fun rock performance by a black cat band led by Stitch	Stitch, Angel
6	A mysterious but gorgeous chorus performance with Minnie, her friends, and witches	Minnie Mouse, Daisy Duck, Clarice

Other Entertainment

The following show and atmosphere entertainment around the Park will be presented in special versions during the Halloween event period.

Stage Show	Venue
Super-Duper Jumpin' Time	Plaza Pavilion Bandstand

Atmosphere Entertainment	Venue*
Tokyo Disneyland Band	World Bazaar / Plaza Terrace
Bicycle Piano	
Jungle SounDuo	Adventureland
Wild West Chance	Westernland
Roundup & Play	
Opus Five	Tomorrowland
Junior Heroes	
Fun Maintenance	Parade Route
Welcome Flower Band	Inside the Park Entrance
Zip 'n' Zoom Guided Tours	

*The actual location of the atmosphere entertainment varies depending on the performance.

Note: Entertainment programs are subject to change or cancellation due to weather conditions, etc.

Attraction

The Fantasyland attraction **Haunted Mansion** will be transformed from September 3, 2016 through January 4, 2017 to reflect the film *Tim Burton's The Nightmare Before Christmas*, for the special program **Haunted Mansion "Holiday Nightmare."**

Tokyo DisneySea Special Event “Disney’s Halloween”

Entertainment Programs

The Villains World: Wishes and Desires

Location: Mediterranean Harbor

Duration: About 25 minutes

Performances: 2 daily

Number of Performers: About 120

Number of barges: 5

It’s Halloween, that time of the year when strange things happen, even during the “Tokyo DisneySea 15th Anniversary: The Year of Wishes.” In the eerie atmosphere, the Disney Villains are hosting a Halloween party at the Park again this year. The villains have prepared their presentations just for this occasion to impress the other Disney Characters and Guests. To make the party even more surprising, the villains have sent invitations to Mickey Mouse and the Disney Friends. Wondering what kind of Halloween party it will be, Mickey Mouse and his Disney Friends decide to attend dressed in costumes inspired by the Disney Villains as a sign of respect for their hosts.

As an eerie narration is heard announcing the start of the Halloween party, five barges with the Disney Villains arrive at Mediterranean Harbor. From the center of the harbor, Maleficent introduces the Disney Friends who are their special guests. After Mickey Mouse and the others appear on the barges, Maleficent powerfully proclaims the opening of the Halloween party. The Villains show off their unique attributes in an impressive performance and are joined by the Disney Friends. As they all celebrate the Park’s 15th Anniversary, Maleficent uses her magical power to heighten the excitement of the party for a glorious finale.

The five barges carrying the Disney Villains and the Disney Friends:

Barge	Disney Villains	Disney film that the Disney Villains appear in	Invited Disney Friends
1	The Queen	<i>Snow White and the Seven Dwarfs</i>	Minnie Mouse
2	Captain Hook Mr. Smee	<i>Peter Pan</i>	Mickey Mouse Pluto
3	Hades Pain, Panic	<i>Hercules</i>	Donald Duck Chip, Dale
4	Jafar	<i>Aladdin</i>	Goofy
5	Maleficent	<i>Sleeping Beauty</i>	Clarice
	Ursula	<i>The Little Mermaid</i>	Daisy Duck

Description of the six major Disney Villains in the show in order of their appearance (Disney film titles shown in parentheses):

The Queen (from *Snow White and the Seven Dwarfs*): The beautiful queen who changes into a witch to give Snow White a poison apple.

Captain Hook (from *Peter Pan*): Peter Pan’s sworn enemy, the notorious hook-handed captain of a pirate ship.

Hades (from *Hercules*): The cool-headed Lord of the Underworld with ambitions to become the ruler of Olympus.

Jafar (from *Aladdin*): The royal vizier who wields a magic staff and plots to take over as sultan of Agrabah.

Maleficent (from *Sleeping Beauty*): The powerful, evil fairy who put a curse on Princess Aurora and can transform into a dragon.

Ursula (from *The Little Mermaid*): The sea witch with who wants to usurp King Triton's position.

Special Program

Casbah Magical Treat (Arabian Coast)

At Casbah Food Court, which has been decorated with motifs inspired by Jafar, Shaban and his assistant Asim from The Magic Lamp Theater attraction as well as servants of Jafar will entertain Guests with various feats of magic.

And in the palace courtyard, Shaban and Asim from The Magic Lamp Theater, a suspicious-looking practitioner of black magic and some of the best magicians from Arabian Coast have a competition over magic. Guests are sure to enjoy this magical atmosphere entertainment.



Other Entertainment

Atmosphere entertainment in other areas of the Park will feature recruiters working for the Disney Villains who approach Guests to show how wonderful the Villains are. Other loyal servants of the Disney Villains will check what the Guests are wearing and give them advice so that the Guests can dress themselves in a proper villain's way.



Note: Entertainment programs are subject to change or cancellation due to weather conditions, etc.

Photos are concept images.

©Disney

At Tokyo Disneyland and Tokyo DisneySea

Decorations

At **Tokyo Disneyland**, photo locations showing the Disney Friends and the cheerful ghosts as entertainment stars putting on a musical performance will be set up in the Plaza. And in the center and along the streets of World Bazaar, cobwebs and jack-o'-lanterns and other Halloween decorations will be set up, raising the Halloween mood even more.

Again this year, Westernland, Fantasyland and Toontown will be decorated with pumpkins, ghosts and more for a lively and cheerful atmosphere.

At **Tokyo DisneySea**, Guests will find decorations themed to “a cool and spooky Halloween with the Disney Villains” in addition to the Tokyo DisneySea 15th Anniversary motifs. Passaggio MiraCosta will be themed as the entrance to the world of the villains and banners designed with the villains will decorate the walls and ceiling of the corridor. A cool, but spooky Halloween atmosphere will await Guests with decorations of the various villains and photo locations at Mediterranean Harbor and the New York area of American Waterfront, and decorations themed to Jafar in Arabian Coast.



Decorations at Tokyo DisneySea

Special Merchandise

At **Tokyo Disneyland**, about 45 different types of special merchandise will be offered to go with the “**Halloween Pop’n LIVE**” parade. The merchandise includes items featuring the autographs of Mickey Mouse and his Disney pals and items like fun caps, towels and more that can be used to enjoy the parade’s live concert atmosphere even more. Also, at the Trading Post in Westernland, there will be around 10 different types of merchandise with designs showing Danny the Little Black Lamb in a confectionery booth at a county fair.



Towel (500 yen)
at Tokyo Disneyland



Hairband (1,800 yen)
at Tokyo DisneySea

At **Tokyo DisneySea**, Guests will find about 50 different types of Tokyo DisneySea special merchandise, including a variety of items designed with the Disney Villains and the Disney Friends from the show, “**The Villains World: Wishes and Desires.**” Also available will be around 20 different types of merchandise showing Duffy and his friends enjoying Halloween.

Available at both **Tokyo Disneyland** and **Tokyo DisneySea** will be about 90 types of merchandise with colorful designs of ghosts and pumpkins besides designs of Mickey Mouse dressed up as a vampire. In addition, there will be pen sets, hand cream sets, and other items to share with friends as well as gift wrap bags for those types of items.



Gift Wrap Bag (500 yen)
at Tokyo Disneyland and
Tokyo DisneySea

Photos are concept images.

©Disney

Note: Special merchandise will be available from September 1.
Duffy-related merchandise will go on sale from September 2.

Special Menus

At **Tokyo Disneyland**, Plaza Pavilion Restaurant will offer a special set meal decorated with musical notes and other motifs inspired by the **Halloween Pop'n LIVE** show. A fun special set with pumpkin motifs will be offered at Huey, Dewey and Louie's Good Time Cafe, while some menu items at Boiler Room Bites and The Gazebo will come in Halloween versions.

And at the popcorn wagons, Halloween popcorn cases will be sold only during this period.



Special Set (1,940 yen)
at Plaza Pavilion Restaurant

At **Tokyo DisneySea**, special set meals incorporating motifs inspired by the Disney Villains will be offered. The special set at New York Deli features the Queen from *Snow White and the Seven Dwarfs* and the one at Zambini Brothers' Ristorante is inspired by Ursula from *The Little Mermaid*, while the special set of black curry and red naan at Casbah Food Court is inspired by the colors of Jafar's costume. In addition, popcorn cases with images of the Disney Villains and the Disney Friends will be sold in the Park. And at Cape Cod Cook-Off in American Waterfront, Guests can enjoy a special set that comes in a Duffy lunch case, as well as a limited-period dessert with a souvenir cup.



Special Set inspired by the Queen
from *Snow White and the Seven
Dwarfs* (1,150 yen)
at New York Deli

In addition, special coasters that make a cup's shadow look like a silhouette of Mickey Mouse will be available only during the Halloween event period. The coasters will have same design at both Tokyo Disneyland and Tokyo DisneySea.

Concept images
©Disney

Note: Special menus will be available from September 1.

Regarding Costumes and Admission at Tokyo Disneyland and Tokyo DisneySea

During the first and last weeks of the Halloween event period (September 9 to 15 and October 25 to 31, a total of 14 days) at **Tokyo Disneyland** and **Tokyo DisneySea**, Guests ages 12 and older dressed in full Disney Character costumes will be admitted. . Guests ages 11 or younger may do so any day during the event period.

For the safety of everyone concerned, Guests in costume may not be allowed to ride some attractions.

*When mentioning that Guests can enter the Park in costume, **please include the information in the box below, or include the following note:*** "For details on the restrictions for visiting Tokyo Disneyland and Tokyo DisneySea in full Disney Character costumes, please check the Tokyo Disney Resort Official Website (Japanese language only) or contact the Tokyo Disney Resort Information Center."

- Guests in costumes other than Disney Character costumes will not be admitted.
- Entering the Park in **full Disney Character costume** is allowed only during the designated days mentioned above (children ages 11 and younger excepted).
- Guests are asked to refrain from wearing costumes that cover their face (including costume make-up, fake scars or injuries and beards), that include sharp, long or dangerous objects or parts, that make it difficult to walk or that are overly revealing.
- Guests may not wear Tokyo Disney Resort Cast Member costumes.
- Guests are asked to refrain from using the restrooms, wheelchair-accessible restrooms, or storage locker areas both inside and outside the Park for changing clothes.
- Guests may be required to take off parts of their costume during shows if they block other people's view.
- Guests may not be allowed to enter the Park if their costume does not follow the above or goes against safety or theme policy.

▼ Special web page regarding wearing Halloween costumes (in Japanese only)

http://www.tokyodisneyresort.jp/special/tdr_halloween_kaso/

Tokyo Disney Resort Vacation Package

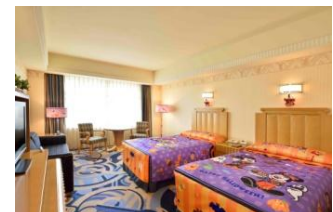
Tokyo Disney Resort Vacation Package* will offer package plans that include hotel accommodations, special viewing area tickets for Halloween entertainment programs at Tokyo Disneyland and Tokyo DisneySea, and Disney FASTPASS® tickets which allow access at any time to select attractions with a minimal wait. The various package plans will allow Guests to take full advantage of all the fun of the Halloween programs being held at the two Parks.

Note: Please visit the Tokyo Disney Resort Online Reservation and Tickets website at <https://reserve.tokyodisneyresort.jp/top/> for more details on Halloween package plans (in Japanese only).

Disney Hotels

Guests can continue enjoying the atmosphere of the Parks' special event "Disney's Halloween" at the Disney Hotels.

Again this year, the **Disney Ambassador® Hotel** will offer guest rooms that are specially decorated for Halloween and featuring the Disney Friends dressed in their Halloween costumes from Tokyo Disneyland. Guests are sure to enjoy the atmosphere of the happiest Halloween ever.



Disney Ambassador Hotel guest room decorated for Disney's Halloween

Photos are concept images.
©Disney

The restaurants and lounges at each of the Hotels will offer special menus for a limited period. At the Disney Ambassador Hotel and the **Tokyo Disneyland® Hotel**, Guests will be able to partake of dishes inspired by the Halloween Music Festival at Tokyo Disneyland that let them enjoy the flavors of autumn. And the **Tokyo DisneySea Hotel MiraCosta®** will offer dishes inspired by the Disney Villains' "cool, but spooky Halloween" at Tokyo DisneySea.



Empire Dinner at Empire Grill, Disney Ambassador® Hotel
© Disney



Afternoon Tea Set at Dreamers Lounge, Tokyo Disneyland® Hotel
© Disney



Lunch Course at Oceano, Tokyo DisneySea Hotel MiraCosta®
© Disney

Notes:

- Reservations for the Disney Ambassador Hotel guest rooms that are decorated for “Disney’s Halloween” will be accepted starting on June 27, 2016 through the Tokyo Disney Resort Reservations Center (0570-05-1118 from 9:00 a.m. to 6:00 p.m.) or on the Tokyo Disney Resort® Online Reservation and Tickets website (<https://reserve.tokyodisneyresort.jp/en/top/>)
- From some mobile phones, IP phones or overseas phones, please call 045-330-5711
- The special menus will be offered starting from September 1, 2016.

Disney Resort Line

The design of some Disney Resort Line monorail trains will change to Halloween motifs during this period. Also, limited-period day passes will be available in two different designs featuring “Disney’s Halloween” at Tokyo Disneyland and Tokyo DisneySea. All of the Disney Resort Line stations will be decorated with Halloween motifs to welcome Guests.



Decoration at Resort Gateway Station

Photos are concept images. ©Disney

Ikspiari

Ikspiari will be hosting the event “Ikspiari Halloween Town” from September 9 through October 31. A variety of events for children and grown-ups will be held throughout the “town” decorated for Halloween. Guests can also enjoy taking part in limited-period workshops. Shops will offer items with ghosts, jack-o’-lanterns and other Halloween motifs, while restaurants will serve exclusive dishes using pumpkin as an ingredient. Wherever Guests go in Ikspiari, they’ll feel the Halloween mood.



Photos are concept images.