



December 12, 2023

FOR IMMEDIATE RELEASE

Milial Resort Hotels Co., Ltd.

Details Announced for Tokyo DisneySea Fantasy Springs Hotel Reservation Start Dates, Guest Benefits, Facilities and More

URAYASU, CHIBA — **Milial Resort Hotels Co., Ltd.** announced that reservations for the new Disney Hotel, **Tokyo DisneySea Fantasy Springs Hotel®**, will start at 1:00 p.m. (Japan Standard Time) on February 8, 2024. Tokyo DisneySea Fantasy Springs Hotel will be located inside Fantasy Springs, the eighth themed port of **Tokyo DisneySea® Park** opening on June 6, 2024.

Details were also announced regarding Tokyo DisneySea Fantasy Springs Hotel guest rooms, restaurants, other hotel facilities and guest benefits, including purchasing privileges for the 1-Day Passport: Fantasy Springs Magic Park ticket, which allows guests to access Fantasy Springs anytime for the duration of their stay during the Park's operating hours, and experience the attractions in the new themed port with a reduced wait time, and without specifying the time in advance.



Exterior view of Grand Chateau from inside the Park



Exterior view of Fantasy Chateau from inside the Park

Situated near the magical springs in Fantasy Springs, the hotel offers an immersive accommodation experience where guests can enjoy the atmosphere of the Park with springs embedded with Disney characters created by its magical waters in the main entrance and the courtyard.

The hotel comprises two buildings: the deluxe-type Fantasy Chateau and the luxury-type Grand Chateau. The Fantasy Chateau offers rooms adorned with motifs of the flora and fauna of Fantasy Springs, while the Grand Chateau offers rooms that provide guests with the finest accommodation experience available at **Tokyo Disney Resort®**.

The Disney hotels offer a diverse selection of hotel types to cater to the various needs of our guests, and provide a wonderful stay for all at Tokyo Disney Resort.

Hotel Reservations and Restaurant Priority Seating

Hotel Reservations

• Guest Room Reservations

Guests can make reservations starting 1:00 p.m., February 8, 2024 (JST), for check-in dates from June 6 to 8, 2024. For check-in dates from June 6, the Grand Opening of the hotel, to July 6, the eligible period to make a reservation will differ based on the date of check-in. Reservations on or after July 7 will be accepted from 11:00 a.m. four months before the guests' planned date of stay through the Tokyo Disney Resort Online Reservations & Tickets website.

Check-in date	Guests can make reservations starting from
June 6 – 8, 2024	1:00 p.m., February 8, 2024
June 9 – 15, 2024	1:00 p.m., February 15, 2024
June 16 – 22, 2024	1:00 p.m., February 22, 2024
June 23 – 29, 2024	1:00 p.m., February 29, 2024
June 30 – July 6, 2024	1:00 p.m., March 6, 2024
From July 7, 2024 onwards	11:00 a.m., four months before guests' day of stay

Notes:

- Regarding reservations for July 7, 2024 and onwards: if the same date for your intended stay does not exist in the month in which you are making your reservation, bookings will be accepted from 11:00 a.m. on the first day of the following month.
- Reservations can be made for up to five nights and up to three rooms for the dates available.
- The above dates are subject to change.

• Tokyo Disney Resort Vacation Package Reservations

Guests will also have the option to reserve an accommodation plan with Tokyo Disney Resort Vacation Packages that include a stay at Tokyo DisneySea Fantasy Springs Hotel's Fantasy Chateau and a 1-Day Passport: Fantasy Springs Magic*. These plans will become available for reservations from mid-January. Details will be announced on the Tokyo Disney Resort Online Reservations & Tickets website as soon as they are determined.

* Depending on the Vacation Package plan, guests will also have the option to select guest rooms at a Disney hotel other than the Tokyo DisneySea Fantasy Springs Hotel.

• Reservations through a Travel Agency

For hotel reservations through a travel agency, please contact your travel agency agent.

Priority Seating at Hotel Restaurants

Reservations via Priority Seating (a system for dining with a minimal wait) will begin when hotel reservations open at 1:00 p.m. on February 8, 2024, on the Tokyo Disney Resort Online Reservations & Tickets website.

Notes:

- At the time of opening, dining at the hotel restaurants is limited to guests staying at Tokyo DisneySea Fantasy Springs Hotel. Please note that for the time being, La Libellule will only be available to Grand Chateau guests.
- Tokyo Disney Resort Vacation Packages will offer a plan with the option to reserve lunch or dinner at Fantasy Springs Restaurant, regardless of the guests' Disney hotel of stay.

Main Guest Benefits

Entry To Fantasy Springs

Guests staying at Tokyo DisneySea Fantasy Springs Hotel who will also visit Tokyo DisneySea can enter Fantasy Springs at any time for the duration of their stay during the Park's operating hours by presenting their Proof of Stay at Tokyo DisneySea Fantasy Springs Hotel and a valid Park ticket. Furthermore, guests staying at the hotel can enter the themed port directly through the Fantasy Springs Entrance, and guests staying at Grand Chateau can also use the Grand Chateau guest-exclusive entrance, Grand Chateau Gateway, which provides even more convenient access to Fantasy Springs.

Notes:

- A Park ticket for Tokyo DisneySea (sold separately) is required for entry to Tokyo DisneySea.
- To experience attractions or to dine at restaurants eligible for Disney Mobile Order in Fantasy Springs, guests are required to obtain a Standby Pass, or purchase Disney Premier Access or 1-Day Passport: Fantasy Springs Magic.

<https://www.tokyodisneyresort.jp/en/topics/info/fantasysprings.html>

Purchasing Privileges for 1-Day Passport: Fantasy Springs Magic

Guests staying at the hotel can purchase the 1-Day Passport: Fantasy Springs Magic, which allows guests to access Fantasy Springs and experience the attractions in the new themed port with a reduced wait time, and without specifying the time in advance.

Notes:

- Guests may use the Priority Access Entrance when experiencing attractions at Fantasy Springs, with the exception of Fairy Tinker Bell's Busy Buggies.
- Please note that there may be a longer wait for the attractions during busy times.
- The 1-Day Passport: Fantasy Springs Magic can also be purchased as part of Tokyo Disney Resort Vacation Packages.
- About 1-Day Passport: Fantasy Springs Magic: <https://www.tokyodisneyresort.jp/en/topics/info/fantasysprings/magic.html>

Happy Entry

Guests staying at a Disney hotel are eligible for "Happy Entry," a Disney hotel benefit that allows guests to enter **Tokyo Disneyland® Park** or Tokyo DisneySea through a Special Entrance for Disney hotel guests, 15 minutes earlier than other guests. This benefit is not available on the day of check-in.

Note: Guests staying in Fantasy Chateau can use the Fantasy Springs Entrance with Happy Entry, and guests staying in Grand Chateau can use the Grand Chateau Gateway to enter Fantasy Springs using Happy Entry.

Hotel Facilities

Fantasy Chateau

From guest rooms to public spaces within the hotel, Fantasy Chateau is adorned with motifs of the flora and fauna of Fantasy Springs. The terrace located directly in front of the reception desk affords magnificent views of the Park, offering an immersive accommodation experience where guests can enjoy the atmosphere of Fantasy Springs.

Guest Rooms

Fantasy Chateau's 419 guest rooms feature decorations with characters such as Rapunzel and Bambi from the stories of Walt Disney Animation Studios, and are filled with floral motifs including the wallpaper to room lighting. The guest rooms are available in four different location categories: Bay Area Side, Hotel Entrance Side, Rose Court Side, and Springs Side.



Example of a Guest Room in Fantasy Chateau
©Disney

Fantasy Springs Restaurant

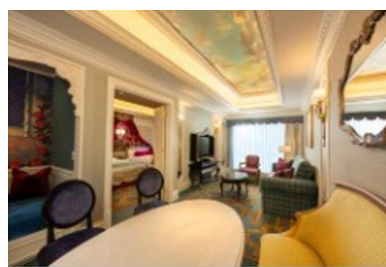
This restaurant serves buffet style breakfast, lunch, and dinner. The interior is decorated with paintings inspired by the Disney Animation films *Snow White and the Seven Dwarfs*, *Tangled* and *Sleeping Beauty*, and features blue birds and other woodland creatures.

Grand Chateau

Guests staying at Grand Chateau have exclusive access to this elegant and grandiose ambience offering the finest accommodation experience at Tokyo Disney Resort. Guests also have the option to make requests in advance of their stay to receive personalized recommendations for their visit at Tokyo Disney Resort. From the moment of the guests' arrival until departure, the Grand Chateau cast members are on hand to ensure personal service for each and every guest.

Guest Rooms

Grand Chateau's 56 guest rooms are all fitted with a balcony or terrace, affording magnificent views of the Park and immersing guests in the magical world of Disney fantasy. A stay at Grand Chateau also includes Attraction Tickets to enjoy attractions with minimal wait, and tickets for viewing shows to view performances from an exclusive viewing area.



Example of a Guest Room at Grand Chateau

La Libellule

La Libellule, with its impressive crystal chandelier, offers French fine dining experience in a majestic ambience exclusive to guests staying at Grand Chateau.

For breakfast, guests can order a main dish from the menu and freely select additional items from the buffet. For dinner, guests can experience authentic French cuisine. The restaurant also features private rooms for Disney character greetings, allowing guests to have a special time during their visit.

Note: Disney character greetings are available only to guests who place an order for the eligible breakfast or dinner courses.



Grand Paradis Lounge

Guests can relax in this spacious and elegant lobby lounge located between Fantasy Chateau and Grand Chateau. With a panoramic window on the Fantasy Springs side, guests can enjoy dining in an elegant ambience.

Note: At the time of opening, the hotel may only be accessed by guests staying at Tokyo DisneySea Fantasy Springs Hotel and guests dining at Fantasy Springs Restaurant. Furthermore, at the time of opening, Grand Chateau may only be accessed by guests staying at Grand Chateau.

For inquiries from the general public, please see below.

General inquiries about Tokyo Disney Resort

<https://www.tokyodisneyresort.jp/en/info.html>

(Tokyo Disney Resort Official Website)

Attachment

Tokyo DisneySea Fantasy Springs Hotel

Name: Tokyo DisneySea Fantasy Springs Hotel®

Address: 1-2 Maihama, Urayasu-shi, Chiba-ken, Japan
(Two-minute walk from Bayside Station on the Disney Resort Line)

Opening: June 6, 2024

General Manager: Koji Kuwana

Owned by: Oriental Land Co., Ltd. (land and building)

Management/Operations: Milial Resort Hotels Co., Ltd.
(100% subsidiary of Oriental Land Co., Ltd.)

Structure: 9 floors above ground (1st floor is integrated with the Park)

Guest rooms: 475 rooms (3F to 9F)

Total floor area (approx.): 64,000 m²

Parking (approx.): 400 vehicles

Guest Rooms

Fantasy Chateau: 419 rooms

Room Type	No. of Rooms	Room Size (m ²)	Capacity (Adults)
Bay Area Side: Located on the side of the hotel facing Tokyo Disney Resort Official Hotels.			
Superior Room	23	41	4
Superior Alcove Room	128	41	4
Deluxe Room	5	48	4
Deluxe Accessible Room	1	48	3
Hotel Entrance Side: Located on the same side as the hotel's main entrance.			
Superior Room	26	41	4
Superior Alcove Room	70	41	4
Deluxe Room	4	48	4
Rose Court Side: Located on the side facing Rose Court, the courtyard with a magical spring and stones with motifs of characters from the Disney Animation Film <i>Beauty and the Beast</i> .			
Superior Room	21	41	4
Superior Alcove Room	96	41	4
Superior Room (Park View)	4	41	4
Superior Alcove Room (Park View)	22	41	4
Deluxe Room	2	48	4
Deluxe Accessible Room	2	48	3
Springs Side: Located on the side facing Fantasy Springs in Tokyo DisneySea.			
Deluxe Alcove Room (Partial View)	4	50	5
Deluxe Alcove Room (Park Grand View)	6	50	5
Deluxe Accessible Room (Partial View)	1	50	3
Deluxe Balcony Room (Park Grand View)	2	50	5
Deluxe Balcony & Alcove Room (Park Grand View)	2	50	5

Partial View

These rooms face Fantasy Springs, but the view is partially obstructed by the walls and roofs of buildings in the area.

Park View

Rooms with a view of Fantasy Springs.

Park Grand View

Rooms with a view facing Fantasy Springs.



Guest room locations (Concept image)

Grand Chateau: 56 rooms

Room Type	No. of Rooms	Room Size (m ²)	Capacity (Adults)
Alcove Room (4F to 7F)	32	70	4
Alcove Room (8F to 9F)	4	70	4
Terrace Room (5F to 7F)	3	70	4
Terrace Accessible Room (3F)	1	70	3
Terrace & Alcove Room (3F to 5F)	10	70	4
Grand Room (5F to 6F)	2	100	4
Grand Room (9F)	2	100	4
Grand Terrace Room (8F)	2	100	4

Note: All guest rooms have either a balcony or terrace, the size of which will depend on the room type.

Restaurants

Fantasy Springs Restaurant (All Day Dining)

(Fantasy Chateau 1F, approximately 270 seats)

Eligible Guests

At the time of opening, dining is limited to guests staying at Tokyo DisneySea Fantasy Springs Hotel and guests with eligible Tokyo Disney Resort Vacation Packages plans*.

* Tokyo Disney Resort Vacation Packages will offer a plan with the option to reserve lunch or dinner at the restaurant, regardless of the guests' Disney hotel of stay.

Hours

Breakfast	Lunch	Dinner
6:30 a.m. to 10:00 a.m.	11:30 a.m. to 2:30 p.m.	5:00 p.m. to 9:30 p.m.

Grand Paradis Lounge (Lobby Lounge)

(Grand Lobby 2F, approximately 70 seats)

Eligible Guests

At the time of opening, dining is limited to guests staying at Tokyo DisneySea Fantasy Springs Hotel.

Hours

Sweets and Cocktails
12:00 p.m. to 10:00 p.m.

La Libellule (French Dining)

(Grand Chateau 3F, approximately 80 seats)

Eligible Guests

At the time of opening, dining is limited to guests staying at Grand Chateau.

Hours

Breakfast	Dinner
7:00 a.m. to 11:00 a.m.	5:00 p.m. to 9:00 p.m.

Shop

Joyful Springs (Fantasy Chateau 3F)

This shop offers a range of daily sundries from soft drinks and confectionery to diapers and baby items.

Other Facilities

Rose Court (Fantasy Chateau 3F)

The hotel courtyard, Rose Court is filled with rich natural greenery around a magical spring, and features stones with motifs of characters from the Disney Animation film *Beauty and the Beast*.

Grand Chateau Lounge (Grand Chateau 3F)

A lounge exclusive to guests staying at Grand Chateau. Here, guests can complete check-in and checkout as well as receive a service tailored to their personal requests.

Fantasy Springs Entrance

A Park entrance exclusive to guests staying at Tokyo DisneySea Fantasy Springs Hotel that connects directly to Fantasy Springs in Tokyo DisneySea.

Grand Chateau Gateway (Grand Chateau 1F)

A Park entrance exclusive to guests staying at Grand Chateau that connects directly to Fantasy Springs.

Available Services

Online Check-In

Guests can register details in advance through the Tokyo Disney Resort Online Reservations & Tickets website and complete check-in at the hotel by scanning their mobile device with the check-in reader. Once check-in is complete, the guest's personal smartphone can be used as a room key.

Express Checkout

Guests can checkout from their rooms via the guest room television and leave without stopping at the Front Desk.

Baggage Delivery Service

Baggage dropped off at the Tokyo Disney Resort Welcome Center can be delivered to the hotel.

Note: Information on other services will be announced on the Tokyo Disney Resort Official Website as soon as they are determined.

Guest Benefits

Entry To Fantasy Springs

Guests staying at Tokyo DisneySea Fantasy Springs Hotel who will also visit Tokyo DisneySea can enter Fantasy Springs at any time for the duration of their stay during the Park's operating hours by presenting their Proof of Stay at Tokyo DisneySea Fantasy Springs Hotel and a valid Park ticket.

Furthermore, guests staying at the hotel can enter the themed port directly through the Fantasy Springs Entrance, and guests staying at Grand Chateau can also use the Grand Chateau guest-exclusive entrance, Grand Chateau Gateway, for an even more convenient access to Fantasy Springs.

Notes:

- A Park ticket for Tokyo DisneySea (sold separately) is required for entry to Tokyo DisneySea.
- To experience attractions or to dine at restaurants eligible for Disney Mobile Order in Fantasy Springs, guests are required to obtain a Standby Pass, or purchase Disney Premier Access or 1-Day Passport: Fantasy Springs Magic.

Purchasing Privileges for 1-Day Passport: Fantasy Springs Magic

Guests staying at the hotel can purchase the 1-Day Passport: Fantasy Springs Magic, which allows guests to access Fantasy Springs and experience the attractions in the new themed port with a reduced wait time, and without specifying the time in advance.

Notes:

- Guests may use the Priority Access Entrance when experiencing attractions at Fantasy Springs, with the exception of Fairy Tinker Bell's Busy Buggies.
- Please note that there may be a longer wait for the attractions during busy times.

Happy Entry

Guests staying at a Disney Hotel are eligible for "Happy Entry," a Disney Hotel benefit that allows guests to enter Tokyo Disneyland or Tokyo DisneySea through a Special Entrance for Disney Hotel guests, 15 minutes earlier than other guests. This benefit is not available on the day of check-in.

Note: Guests staying in Fantasy Chateau can use the Fantasy Springs Entrance with Happy Entry, and guests staying in Grand Chateau can use the Grand Chateau Gateway to enter Fantasy Springs using Happy Entry.

Purchasing Park Tickets

Guests can purchase a Park ticket at the hotel for entry to Tokyo Disneyland or Tokyo DisneySea anytime during their stay.

Note: Park tickets can still be purchased at the hotel even if the tickets are sold out on the Tokyo Disney Resort Official Website.

More information regarding additional guest benefits will be announced on the Tokyo Disney Resort Official Website as soon as they are determined.

The information in this release is current as of December 12, 2023, and is subject to change.